	型号/Our model: YHY-12010000
	客户/Customer: Kobol Innovations
	日期/Date: 2019/4/11
	样品编号/SAMPLE#:

AC/DC POWER ADAPTER SPECIFICATION

客 户:

CUSTOMER: Kobol Innovations Pte. Ltd.

产品描述:

DESCRIPTION: Input:100-240V~ 50/60Hz Output:12V== 10A

产品型号:

OUR MODEL NO: YHY-12010000

样品编号:

日期:

SAMPLE NO: Y DATE: 2019-4-11

产品颜色:

SAMPLE COLOR: Black White

APPROVAL SIGNATURE/客户确认		
核准/APPROVED BY	审核/CHECKED BY	检测/TESTED BY
Manufacturer/制造商		
业务/SALES	核准/APPROVED BY	设计/DESIGNED BY
	Seraphim	Jim Chen

Manufacture: ShenZhen Ying Hui Yuan Electronics Co., Ltd

制造商: 深圳英辉源电子有限公司

Add: 3F A building NongDian Industrial FuYong Town, BaoAn District, ShenZhen, China

地址: 广东省深圳市福永镇白石厦农电工业区 A 栋 3 楼





 	型号/Our model: YHY-12010000
	客户/Customer: Kobol Innovations
	日期/Date: 2019/4/11
	样品编号/SAMPLE#:

Table of contents

- 1、描述/ DESCRIPTION..... 1
- 2、输入特性/INPUT CHARACTERISTICS..... 2
- 3、输出特性/OUTPUT CHARACTERISTICS.....3
- 4、保护功能/PROTECTION FUNCTION.....4
- 5、环境要求/ENVIRONMENTAL REQUIREMET.....5
- 6、安全及 EMI 要求/SAFETY AND EMC REQUIREMENT..... 6
- 7、结构参数/MECHANICAL REQUIREMENT.....7
- 8、线材/CORD..... 8

1、描述/ DESCRIPTION:

本规格书适用于 YHY-12010000 型号的开关电源.

The purpose of the document is to specify a Single phase AC Input, Single output switching power supply, This product is AC to DC switching power transfer device, it can provide for a **12v, 10A max & 120W** max DC Output with constant voltage source. This Specification defines the input, output , performance characteristics, environment, noise and safety requirement for a power supply.

2、输入特性/INPUT CHARACTERISTICS:

2.1 输入电压/Input Voltage:

额定电压/Rated Voltage:100~240Vac 调整范围/Variation Range:90-264Vac

2.2 输入频率/Input Frequency:

额定频率/ Rated Frequency: 50/60Hz. 调整频率/Variation Frequency:47-63Hz

2.3 输入电流/Input Current:

当输入交流电压为额定值的下限电压负载满载时,最大输入交流电流 2.5A.

2.5Amps max At any input voltage and rated, DC output rated load.

2.4 浪涌电流/Inrush Current (cold start) : 30A Max. @110Vac/60Hz

: 60A Max. @230Vac/50Hz

2.5 AC 漏电流/Ac Leakage Current:

当输入电压 240Vac 时,最大漏电流为 0.25mA.

0.25mA Max.At240Vac input.

3、输出特性/OUTPUT CHARACTERISTICS:

3.1 输出功率/Power output

电压 Voltage	最小负载 Min. Load	额定负载 Rated. Load	峰值功率 Peak	输出功率 Output power
12Vdc	0.00A	10A	120W	120W

3.2 负载特性,调整率/Combined Load/Line Regulation

电压	最小负载	额定负载	线性调整	负载调整
----	------	------	------	------



型号/Our model: YHY-12010000
客户/Customer: Kobol Innovations
日期/Date: 2019/4/11
样品编号/SAMPLE#:

Voltage	Min. Load	Rated. Load	Line Regulation	Load Regulation
12Vdc	0.01A	10A	±3%	±5%

3.3 纹波和噪音 Ripple and Noise:

测试条件: 当 115/230Vac 输入电压时,使用示波器带宽为 20MHz 连接到充电器的输出端,同时输出端并联一个 47uF 的电解电容和一个 0.1uF 的瓷片电容.

At 115/230Vac input voltage, the ripple and noise are as follows when measure with Max. Bandwidth of 20MHz and Parallel 47uF/0.1uF, crossed connected at testing point.

电压	最大纹波/最大噪音
<u>Voltage</u>	<u>Ripple and Noise(Max.)</u>
+12Vdc	120mV p-p

3.4 启动延迟时间/Turn on delay time:

当输入 115Vac 和输出最大负载时,最大启动时间为 3S.
3Second Max.at 115Vac input and output Max.load.

3.5 上升时间/Rise time:

当输入 115Vac 和输出最大负载时最大时间为 40 mS.
40 mS Max.at 115Vac input and output Max load.

3.6 保持时间/Hold up time:

当输入 115Vac 和输出最大负载时,最小保持时间为 5 mS .
5 mS Min.at 115Vac input and output Max.Load.

3.7 效率/Efficiency:

230Vac/50Hz Efficiency(Typical full load)	115Vac /60Hz Efficiency(Typical full load)	115V/60Hz&230V/50Hz Average Efficiency(25%,50%,75%,100% rated load)
≥85.0%	≥85.0%	- min

3.8 过冲/Overshoot:

在电源开启或关闭的时候,最大 15%.
15% Max.When power supply at turn or turn off.

4、保护功能/PROTECTION FUNCTION:

4.1 短路保护/Short circuit Protection:

该电源供给器在短路解除时能正常工作恢复.
The power supply will be auto recovered when short circuit faults remove.

4.2 过流保护/Over current Protection:

过流故障排除后,电源将自动恢复正常工作.

The power supply will be auto recovered when over current faults remove.

4.3 Over Voltage Protection

过压故障排除后,电源将自动恢复正常工作.

The power supply will be auto recovered when over voltage faults remove.

5、环境要求/ENVIRONMENTAL REQUIREMET:

5.1 工作温度/Operating Temperature:

0°C-65°C,满载,正常工作.

0°C to 65°C,Full load, Normal operation.

5.2 储藏温度/Storage Temperature:-20°C to 80°C

带外壳/With package

5.3 工作湿度/Relative Humidity:

5%(0°C)~90%(40°C),72 小时,满载,正常工作.

5%(0°C)~90%(40°C)RH,72Hrs,Full load, Normal operating.

5.4 振动/Vibration:

1. 测试标准:国际电工电子委员会

Operating: IEC 721-3-3 3M3

5~9Hz,A=1.5mm

加速度(9~200Hz,Acceleration 5m/S²)

2. 运输/Transportation:

IEC 721-3-2 2M2

5-9Hz,A=3.5mm

9~200Hz,加速度 Acceleration=5m/S²

200~500Hz,加速度 Acceleration=15m/S²

3. 轴向振动/Axes,10 cycles per axis.

在测试过程中不能出现永久性的损坏.

No permanent damage may occur during testing.

在电源开启和关闭后,样机能够恢复到最初条件.

The SAMPLE has to restore to its original situation after power off/on..



5.5 跌落试验/Dropping Packed:

跌落高度为 1 米

1M for above described.

测试台面是厚 13mm 的夹木板,离地面高 19-20mm

The horizontal surface consists of hardwood at least 13mm thick, mounted on two layers of plywood

 	型号/Our model: YHY-12010000
	客户/Customer: Kobol Innovations
	日期/Date: 2019/4/11
	样品编号/SAMPLE#:

each 19mm to 20mm thick, all supported on a concrete or equivalent non-resilient floor.

6、安全及 EMI 要求/SAFETY AND EMI REQUIREMENT:

6.1 高压测试 (HI-POT TEST)

HI-POT---A IEC 320 3pin primary to secondary (FG) 3000Vac 5mA 1min	<input checked="" type="checkbox"/>
HI-POT---B IEC 320 2pin primary to secondary 1700Vac 5mA 1min	<input type="checkbox"/>

6.2 EMI 标准/EMI STANDARD

Meets the Limits of/测试符合

<1>.FCC part 15 : Class B for radiated and conducted emissions.

<2>.EN55022:2010 , Class B for radiated and conducted emissions

<3>.BS EN55015:2013

GB9254,GB17625.1-2012,GB17743

6.3 安全 Safety Certification Standards

The power supply shall complied the following international regulatory standards

符合以下国际常规认证标准

Trademark	Country	Certified Status	Standard
UL/CUL	USA/ Canada	<input checked="" type="checkbox"/>	UL 62368
TUV	Europe	<input checked="" type="checkbox"/>	TUV/VDE-EN60950
FCC	Europe	<input checked="" type="checkbox"/>	47CFR FCC Part15
CE	Europe	<input checked="" type="checkbox"/>	Declared& CE Mark
PSE	Japan	<input checked="" type="checkbox"/>	EN60950
SAA	Australia	<input checked="" type="checkbox"/>	EN60950
C-TICK	Australia	<input checked="" type="checkbox"/>	EN60950
KC/KCC	Korea	<input checked="" type="checkbox"/>	EN60950
GS	Europe	<input checked="" type="checkbox"/>	EN60950
CB		<input checked="" type="checkbox"/>	EN60950

7、结构参数/MECHANICAL REQUIREMENT:

7.1 外壳/Enclosure:

外壳尺寸: 176*72*40mm 桌面型品字接口

The power supply size:L176*W72*H40M

YHY power



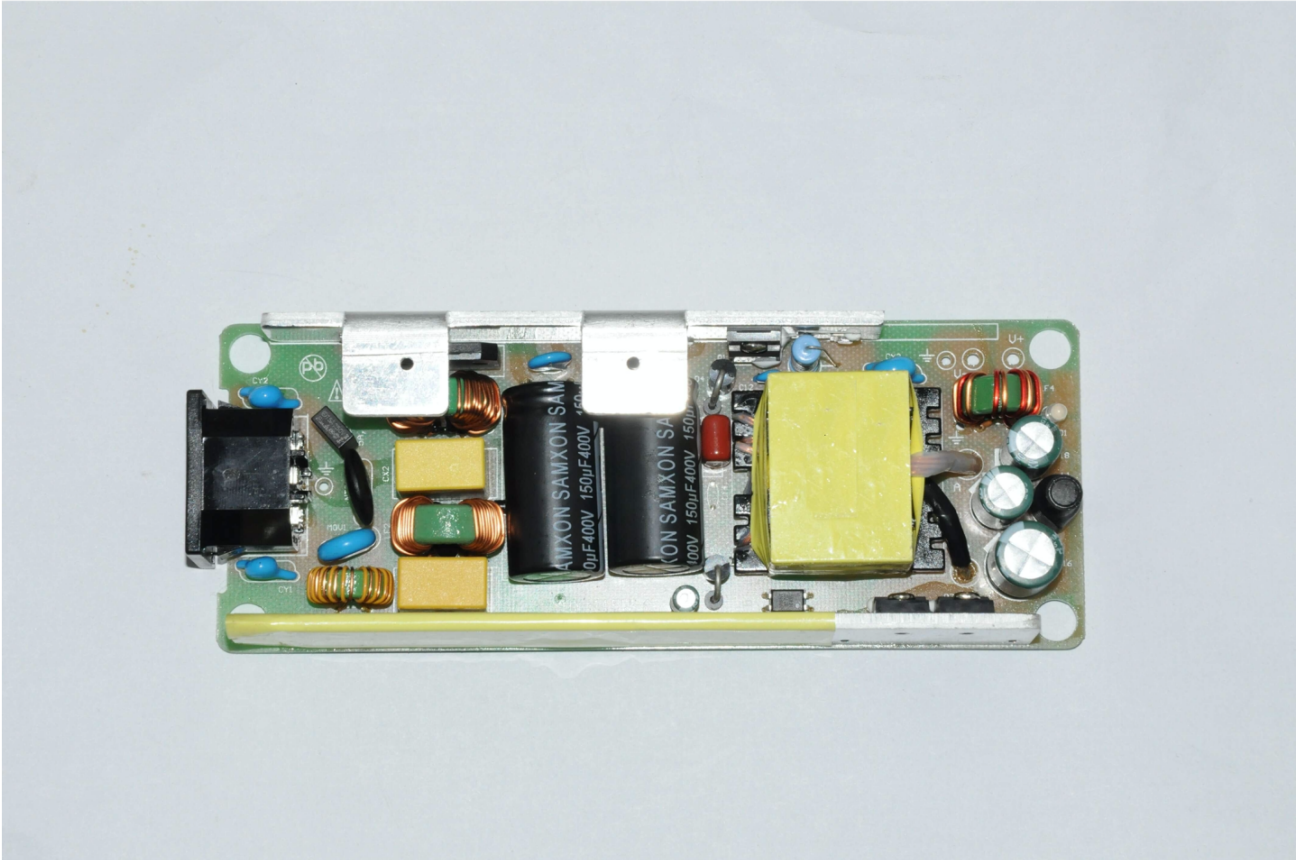
型号/Our model: **YHY-12010000**

客户/Customer: **Kobol Innovations**

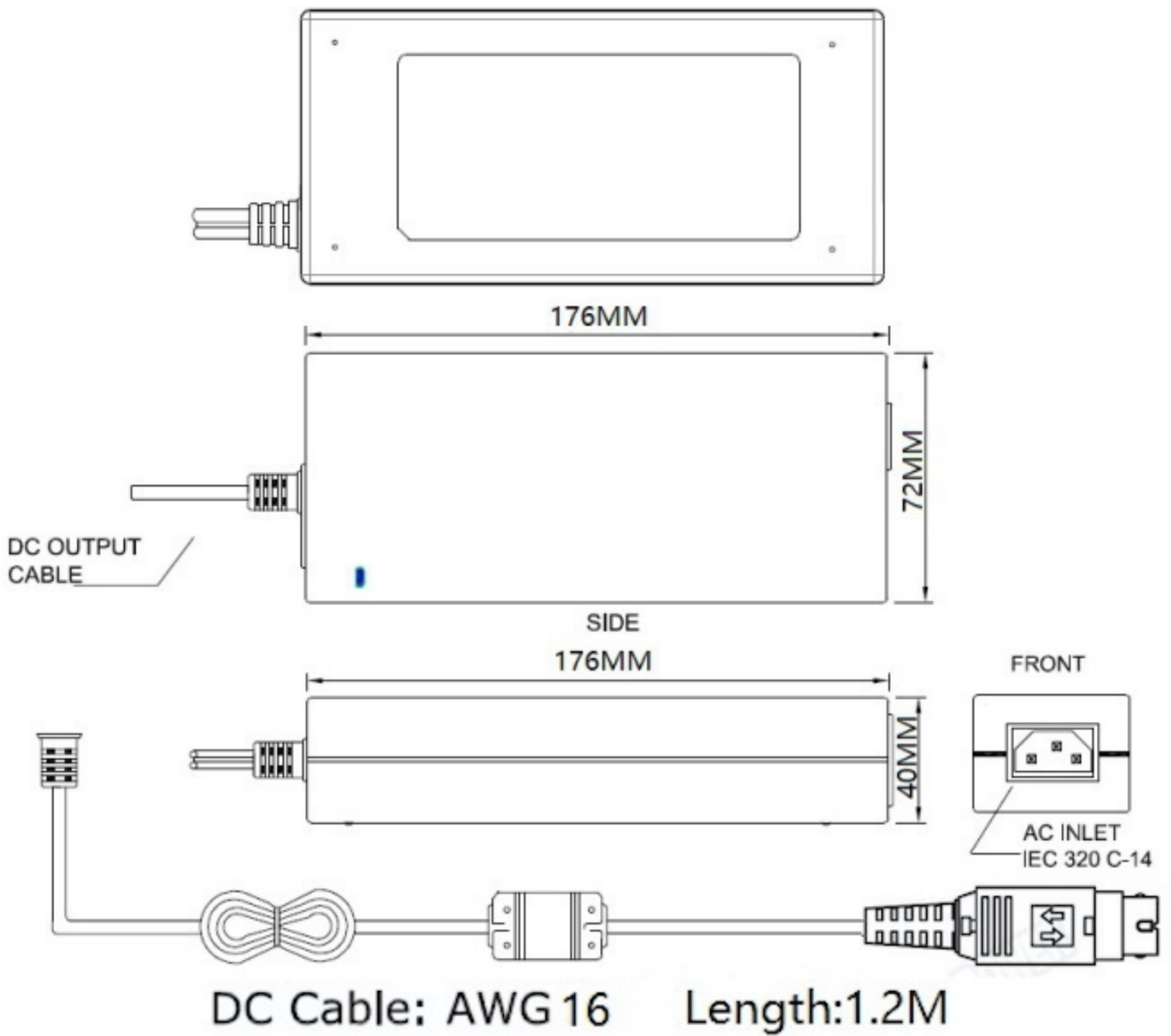
日期/Date: **2019/4/11**

样品编号/SAMPLE#:

PCBA



8、CORD/线材



YHY power

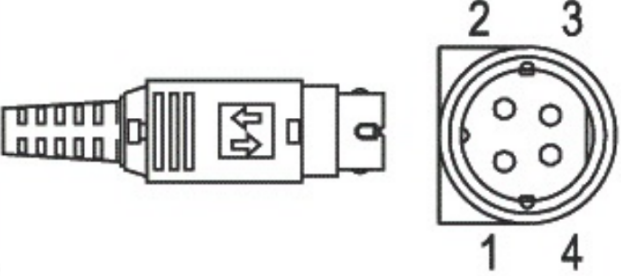


型号/Our model: **YHY-12010000**

客户/Customer: **Kobol Innovations**

日期/Date: **2019/4/11**

样品编号/SAMPLE#:

DIN 4 Pin with lock (DIN4脚带锁)		型号	引脚定义	
	R7B	引脚号	输出	
		1	+Vout	
		2	+Vout	
		3	GND	
		4	GND	